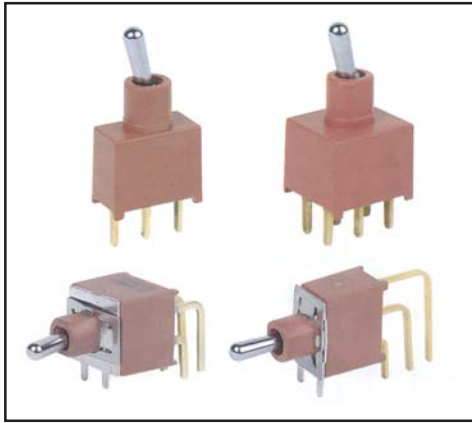


A
9



SPECIFICATIONS

CONTACT RATING: 5A@120 VAC or 28 VDC (Q contact)
ELECTRICAL LIFE: 50,000 make-and-break cycles at full load
CONTACT RESISTANCE: 10 milliohmsmax. initial @2-4 VDC,100mA
INSULATION RESISTANCE: 1,000 MΩ min.
DIELECTRIC STRENGTH: 1,000 V RMS min. @ sea level.
OPERATING TEMPERATURE: -30° C to 85° C

MATERIALS

CASE: Glass filled nylon 6/6 (UL94V-0)
ACTUATOR: Brass, chrome plated with internal o-ring seal - standard
SWITCH SUPPORT: Brass or Steel, Tin plated
CONTACT AND TERMINAL: Silver or gold plated copper alloy
TERMINAL SEAL: Epoxy

Build the switches you need!!

Switch Function

Actuator

Bushing

Termination

Contact Material

(Switch Optionals)

Vertical support Bracket

Actuator Cap

Cap Color

T 8 0 1 3 A E

S

E

C

Q

S 2 0

T 1

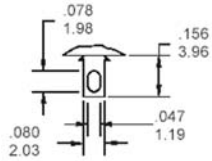
2

Switch Models				Actuator	Bushing	Termination	Vertical support Bracket	Actuator Cap	Cap color
Standard	Horizontal Right Angle	Vertical Right Angle	Function						
				S 10.41 (STD) T 5.08 (STD)	N 6.35 (STD) Non-thd E 8.89 Thd F1 ESD Bushing F1 conductive bushing only. Dissipates up to 20,000 V DC from Actuator to ground	B Solder lug C P.C 1.27 width D Quick connect D1 Wire wrap(19.05) D3 Wire wrap(10.8)	(none) S20 11.68 S25 16.00 S35 11.68 S40 16.00 V20 Snap-in 11.68 V25 Snap-in 16.00 V35 Snap-in 11.68 V40 Snap-in 16.00	(none) T1 10.29 (for actuator S) T2 7.29 (for actuator T)	1 white 2 black 3 red 4 yellow 5 blue
T8013E T8013AE T8014E T8014AE T8014BE T8211E T8211AE T8212E T8212AE T8212BE	T8013EH T8013AEH T8014EH T8014AEH T8014BEH T8211EH T8211AEH T8212EH T8212AEH T8212BEH	T8013EV T8013AEV T8014EV T8014AEV T8014BEV T8211EV T8211AEV T8212EV T8212AEV T8212BEV	SP on-none-on SP on-none-(on) SP on-off-on SP (on)-off-(on) SP on-off-(on) DP on-none-on DP on-none-(on) DP on-off-on DP (on)-off-(on) DP on-off-(on)						
3 Way Position Switches									
T812E	T812EH	T812EV	SP3T on-on-on						

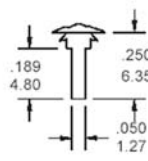
Termination

TERMINAL OPTION (ONLY FOR THE STRAIGHT TYPE T8013E~T8401E)

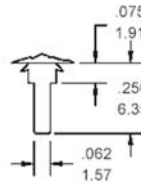
B SOLDER LUG



C PRINTED CIRCUIT



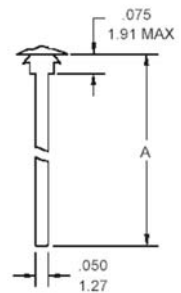
D QUICK CONNECT



D1 WIREWRAP LONG

D3 WIREWRAP

CODE	IA dimension
D1	.750 (19.05)
D3	.425 (10.8)



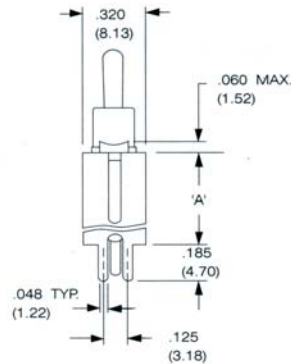
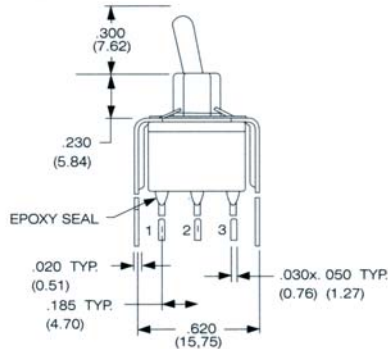
VERTICAL SUPPORT BRACKET OPTION

Only for Straight PC Type Termination (Use with option iC terminal)

S20 / S25 / V20 / V25 (SPDT)

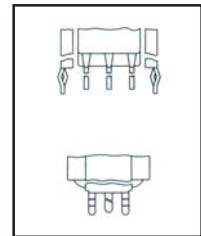
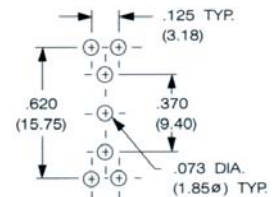


Option Code	A Dimension
S20 / V20	.460 11.68
S25 / V25	.630 16.00
V20 / V25 : the snap-in type	



T8013 - TNCQ-S20(S25)

P.C. MOUNTING

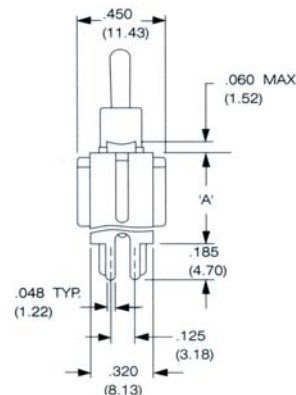
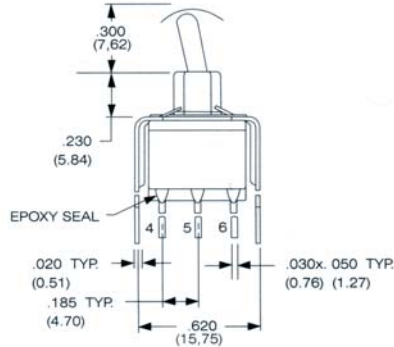


SNAP-IN V20 / V25

S20 / S25 / V20 / V25 (DPDT)

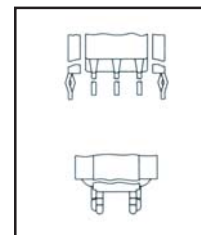
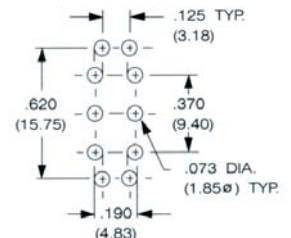


Option Code	A Dimension
S20 / V20	.460 11.68
S25 / V25	.630 16.00
V20 / V25 : the snap-in type	



T8211 - TNCQ-S20(S25)

P.C. MOUNTING



SNAP-IN V20 / V25

